

MON FRÈRE

Timbales

♩ = 168 Clave 2-3

Maxime Le Forestier / Arrgt Christophe BLOND

INTRO Wood-Block (2ème x)

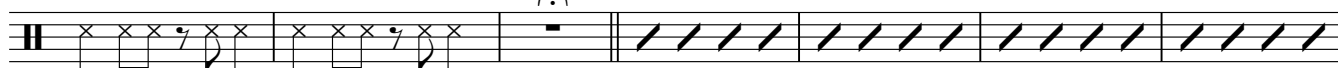


9

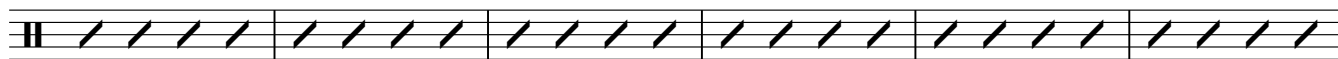


15

Décompte **A** Couplet 1
Cascara + Clave 2-3



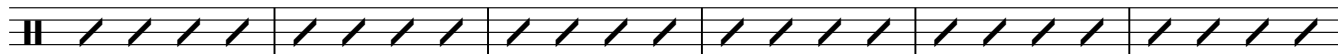
22



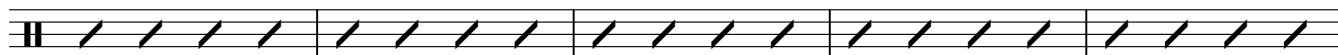
28



34 **B** Couplet 2
Cascara + Clave 2-3



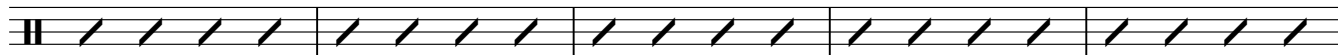
40



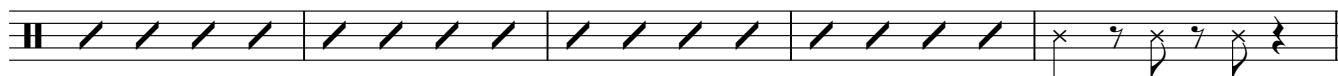
45



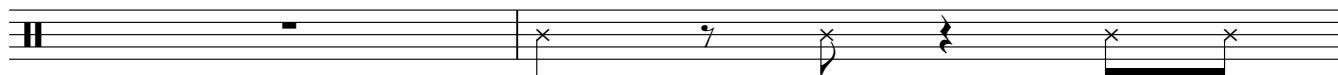
50 **C** Interlude 1
Contra-campana



55



60 **D** Refrain 1



Mon frère
Timbales

62 Contra-campana

67

73

78

82 **E** Interlude 2
Campana

88 **F** Couplet 3
Cascara + Clave 2-3

94

99

104 **G** Couplet 4
Cascara + Clave 2-3

110

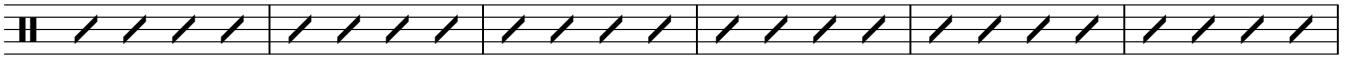
Campana

115

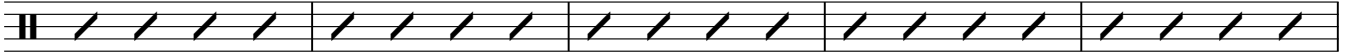
120 **H** Refrain 2 Contra-campana



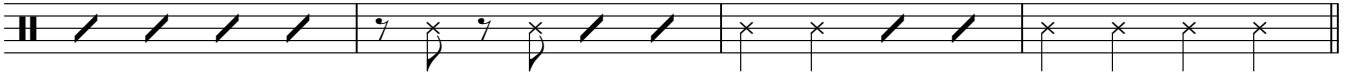
127



133

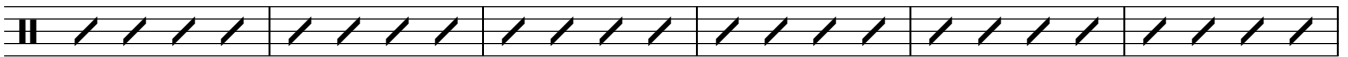


138



I Couplet 5

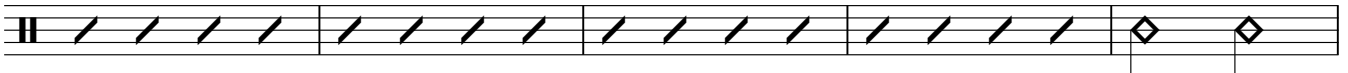
142 Cascara + Clave 2-3



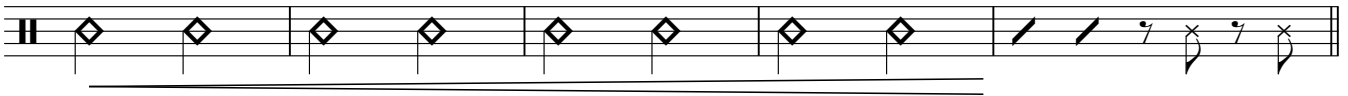
mp

148

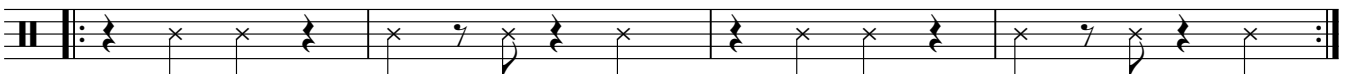
Campana



153



158 **J** Clave Wood-Block



Mon frère
Timbales

162 Break

Musical notation for Break (162) on a single staff. It features a series of rhythmic patterns with 'x' marks indicating specific notes or rests. A triplet of eighth notes is marked with a '3' below it.

166 **K** CHOEURS
Contra-campana

4X

Musical notation for Choeurs (166) on a single staff, consisting of four measures of rhythmic slashes representing a pattern of notes.

170 **L** IMPRO / CHOEURS
Solo Trombone ou Trompette 1

Musical notation for Impro / Choeurs (170) on a single staff, consisting of four measures of rhythmic slashes representing a pattern of notes.

174 Choeurs

4X **CODA** Mambo

Musical notation for Choeurs (174) on a single staff, consisting of four measures of rhythmic slashes representing a pattern of notes, followed by a double bar line and a repeat sign.

180 1. 2.

Musical notation for first and second endings (180) on a single staff. It shows two alternative paths for a rhythmic pattern, labeled '1.' and '2.', separated by a double bar line.

186

Musical notation for section 186 on a single staff, consisting of six measures of rhythmic slashes representing a pattern of notes.